



OVERLOOK

A MURRY BUILT COMMUNITY



The Chord II

Standard Highlights

- Total S.q.ft. 2,389
- 4 Bedrooms
- 2 1/2 Bathrooms
- 9' First floor Wall Height
- 8' 2nd floor Walls
- 8' Basement Superior Walls

Options

- Gas Fireplace
- Rear Patio
- Tray Ceilings
- Oversized Island
- More options Available**

This sheet is for illustrative purposes only and not part of a legal contract. Plans are subject to modification. Room measurements are approximate. Individual unit elevations may vary. Optional items indicated are available at additional cost. Rendering and illustration is artist's concept, may vary in precise detail and may be shown with optional elevation and/or added features. Items that are not included in advertised price are refrigerator, washer and dryer. (8.8.2023)

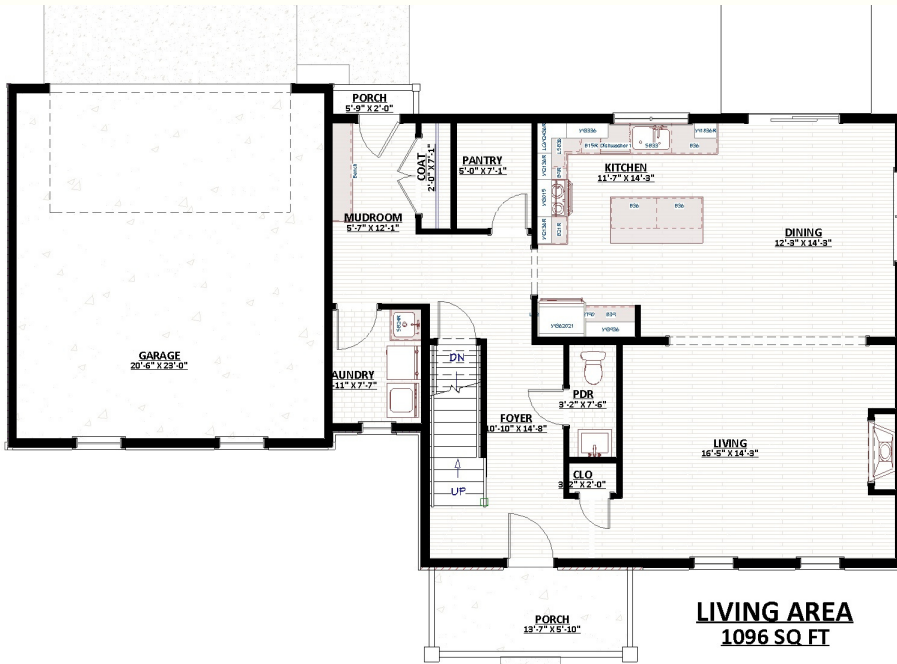


www.murrycommunities.com



OVERLOOK

Murry Builders - A 95 Year Tradition of Home Building Excellence



LIVING AREA
1096 SQ. FT.

The Chord II



LIVING AREA
1293 SQ. FT.

1st Floor

The Chord II Floor Plan

2nd Floor

This sheet is for illustrative purposes only and not part of a legal contract. Plans are subject to modification. Room measurements are approximate. Individual unit elevations may vary. Optional items indicated are available at additional cost. Rendering and illustration is artist's concept, may vary in precise detail and may be shown with optional elevation and/or added features. Items that are not included in advertised price are refrigerator, washer and dryer. (8.8.2023)



For questions about any of our Communities,
call Gretchen Raad, Realtor

717-629-8669

www.murrycommunities.com