



OVERLOOK

A MURRY BUILT COMMUNITY



The Chord

Standard Highlights

- Total S.q.ft. 2,056
- 4 Bedrooms
- 2 1/2 Bathrooms
- 9' First floor Wall Height
- 8' 2nd floor Walls
- 8' Basement Superior Walls

Options

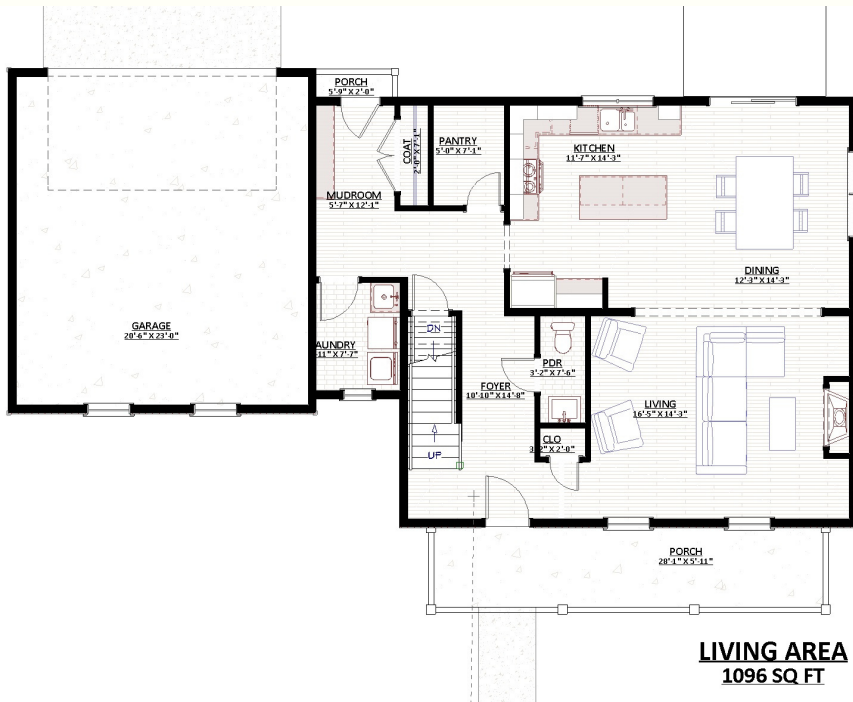
- Gas Fireplace
- Rear Patio
- Tray Ceilings
- Oversized Island
- More options Available**

This sheet is for illustrative purposes only and not part of a legal contract. Plans are subject to modification. Room measurements are approximate. Individual unit elevations may vary. Optional items indicated are available at additional cost. Rendering and illustration is artist's concept, may vary in precise detail and may be shown with optional elevation and/or added features. Items that are not included in advertised price are refrigerator, washer and dryer. (8.8.2023)

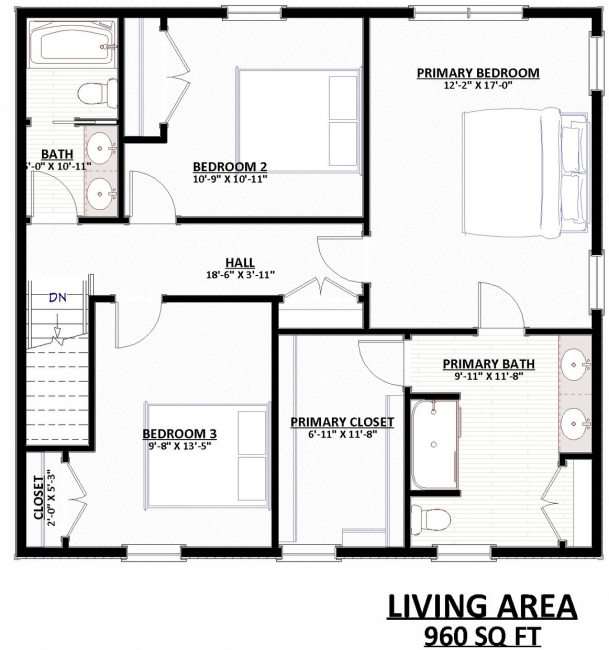


www.murrycommunities.com

Murry Builders - A 95 Year Tradition of Home Building Excellence



The Chord



1st Floor

The Chord Floor Plan

2nd Floor

This sheet is for illustrative purposes only and not part of a legal contract. Plans are subject to modification. Room measurements are approximate. Individual unit elevations may vary. Optional items indicated are available at additional cost. Rendering and illustration is artist's concept, may vary in precise detail and may be shown with optional elevation and/or added features. Items that are not included in advertised price are refrigerator, washer and dryer. (8.8.2023)